

# Welcome to Westmead Public School



# Acknowledgement of / Welcome to Country

A thick, hand-drawn red line that starts below the word 'Country' and extends horizontally across the slide, slightly angled upwards towards the right.

We acknowledge the Dharug people, who are the traditional custodians of the land on which our school sits. We pay our respects to elders past, present and emerging, and extend that respect to all Aboriginal people in our community.

# Zoom Housekeeping

---

- Please ensure your microphone is on mute throughout the duration of the session
- Having your camera on is optional, although we would love to see all of your faces!
- If you have any questions, please type them into the chat.



# Parent Information Evening

This evening we will discuss;

- Information regarding Westmead Public School
- Drop Off and Pick Up
- What's in a lunch box?
- What to pack in a school bag
- Learning in Kindergarten
- How to be ready for Kindergarten
- Best Start
- Kindergarten Orientation
- Uniforms
- P&C
- Community Hub



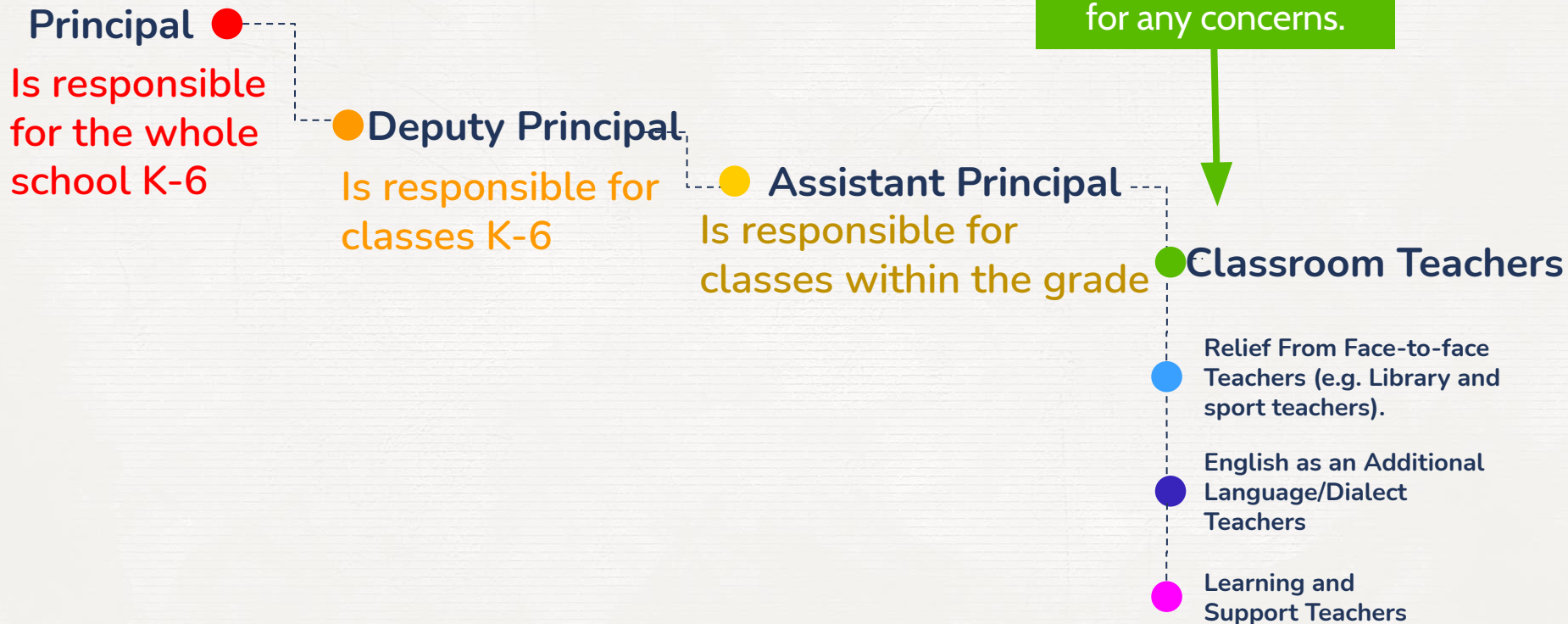


# About Westmead Public School



- *Established in 1917*
- *Current enrolment of 1200 students in 51 classes*
- *Over 70 dedicated staff*
- *Recognised for excellence in educational practice*
- *Extensive range of extra-curricular opportunities (music, dance, drama, visual arts, gardening, etc.)*

# Our school team





# School hours

Time	Activity
8:30-8:55am	Red hat teacher playground supervision
8:55am	Line up bell
8:55-11am	Learning session 1
11-11:30am	Recess
11:30-1pm	Learning session 2
1-1:10pm	Lunch - Eating time
1:10-2pm	Lunch - Play time
2-3pm	Learning session 3
3pm	Pick up time

# Arrival



From 8:30am  
Red hat  
teacher on  
duty

Kiss & bye

Play

Line up at 8:55am



# Drop off & Pick up





# What's in a Lunch box?

## Crunch 'n' Sip

- 10 minute break in the classroom
- Only fruit or salad vegetable and plain water to drink



## Recess

- 30 minute break on the playground
- Small snack that can be consumed quickly



## Lunch

- 10 minutes eating time
- 50 minutes playing time on the playground
- Food that is easy to hold and eat



- ❑ Please ensure that your child can open their food, and that they know which items are for which break.
- ❑ Please label containers with your child's name.

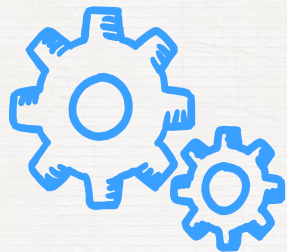


# What to pack in a school bag

- ✗ Lunch box/bag with fruit, recess and lunch
- ✗ Water bottle
- ✗ Change of clothes (including socks and underwear)
- ✗ Raincoat

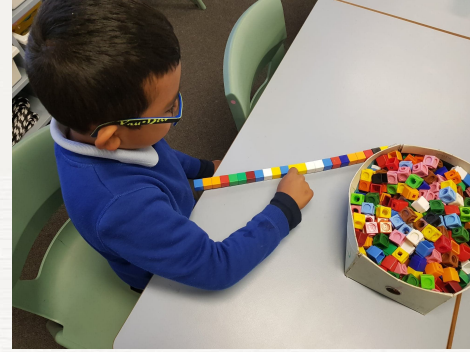
A library bag (you can use the bag from your orientation pack) on the class library day, your class day will be given later in Term 1.





# Life long learners





# What learning looks like at Westmead Public School



# Preparing for change



# Let's Get Ready For Kindergarten!

Help your child be ready for school by ensuring they can:

- ☐ open a lunchbox, drink bottle or a packet of chips
- ☐ go to the toilet independently
- ☐ boys - know how to use a urinal
- ☐ wash hands with soap and water
- ☐ use a tissue to blow their nose
- ☐ zip and unzip their school bag
- ☐ carry their school bag on their own back
- ☐ put on and take off a jumper
- ☐ recognise their name





Please make an appointment for your child on one of the following days:

**Tuesday, 1st February**

**Wednesday, 2nd February**

**Thursday, 3rd February**

Appointments take approximately 45 minutes.

Families will wait while a teacher works through the activities with each child.

- It is a **requirement for every Kindergarten** child in NSW public schools
- A **tool** to help teachers
- Literacy and Numeracy focus, for teachers to understand what skills **a child starts school with**
- You do **NOT** need to prepare for Best Start
- **DOES NOT** influence class formation



# 2022 JANUARY

SUNDAY	MONDAY	TUESDAY	WEDNESDAY	THURSDAY	FRIDAY	SATURDAY
						1
2	3	4	5	6	7	8
9	10	11	12	13	14	15
16	17	18	19	20	21	22
23	24	25	26	27	28	29
30	31					

© BlankCalendarPages.com

Week 1



# 2022 FEBRUARY

SUNDAY	MONDAY	TUESDAY	WEDNESDAY	THURSDAY	FRIDAY	SATURDAY
		1	2	3	4	5
Week 2	×	Best Start			Half day orientation	
6	7	8	9	10	11	12
Week 3	9:30am start					
13	14	15	16	17	18	19
Week 4	8:55am start					
20	21	22	23	24	25	26
27	28					

© BlankCalendarPages.com



Book School Interviews Online

## Kindergarten 2022 Best Start Interviews

Dear Parents/Carers,

We look forward to your child starting Kindergarten at Westmead Public School in 2022. Every child commencing Kindergarten in a NSW Public School completes Best Start, an assessment of the Literacy and Numeracy skills a child has when they start school. Your child will sit with a teacher to complete the activities, the appointment will take approximately 45 minutes.

Best Start interviews for 2022 Kindergarten students will be held in 2022 from 9.00am to 3.00pm on

**Tuesday February 1 2022**

**Wednesday February 2 2022**

**Thursday February 3 2022**

The purpose of the Best Start interview is for teachers to have an understanding of the knowledge and skills students start school with. This allows teachers to better prepare for student learning. There will be a Best Start feedback report for parents that teachers can discuss with you at parent teacher meetings, in Term 1 2022.

More information about Kindergarten 2022 is available on our school website  
<https://westmead-p.schools.nsw.gov.au/>

BOOKINGS OPEN:	9:00am	Monday 29 November 2021
BOOKINGS CLOSE:	4:00pm	Friday 21 January 2022

To make this process simpler, we use an online booking system. To book an appointment for your child **please follow the instructions on the back of this sheet**. When completing your booking, please ensure you type your child's full name and include contact details for yourself. If you require an interpreter, please indicate this when you make a booking. All Best Start interviews will be held in C Block (Kindergarten building) classrooms.

David Jenkins  
Principal  
November 2021

Rose Tilbury  
Relieving Assistant Principal (Kindergarten)

T:\Office\2020\EXCURSIONS EVENTS ACTIVITIES\2021 Kindergarten - Best Start Session Booking Form.docx

Information regarding Best Start and Kindergarten Orientation was sent to the email address that you provided to the school.

It is important to ensure that you have booked in a time for Best Start and Orientation prior to closing date on Friday the 21st of January.

## Kindergarten Orientation Program

Dear Parents/Carers

This year our Kindergarten Orientation program will not be able to take place due to COVID-19 restrictions. Usually we would be inviting both parents and students to join us. However, this year our Kindergarten Orientation Program will take place in the new year in 2022. We are inviting our new Kindergarten students to join us an orientation program on Friday the 4<sup>th</sup> of February where they will spend 1 hour 30 minutes in a Kindergarten classroom. This will allow them to be familiar with their surroundings and get to know our teachers before they start school they following Monday the 7<sup>th</sup> of February.

**You will need to use our online booking system** to reserve a place in one of our orientation groups on the day. You will have 2 sessions to choose from. Each session is 1.5 hours long and each follow the exact same program.

To book an appointment, **please follow the instructions on the back of this sheet**.

Bookings OPEN	Wednesday 29 November 2021	9.00am
Bookings CLOSE	Friday 21 January 2022	3.00pm



	Group	Start Time	Pick Up Time	LOCATION
Friday 4 February	Group 1	9:30am	Between 10:50am to 11:00am	Gate 5
	Group 2	11:30am	Between 12:50pm to 1:00pm	

**\*\*\* Please note: Choose only one group to attend. All groups will receive the same program. \*\*\***

**OUTLINE FOR THE DAYS (Please arrive at school between 9:20am and 9:30am or 11:20am and 11:30am)**

**Arrival Time** - Line up with your child at Gate 5 on Hawkesbury Road and adhere to social distancing markers. You will then be directed to sign in and collect your child's name tag.

**Start Time** - The Kindergarten teachers will take your child to the Kindergarten rooms to take part in various activities to familiarise them with the school. Parents, due to COVID 19 we need to limit the adults we have onsite. Therefore you will need to leave your child with us and come back at pick up time.

**Pick Up** - Please arrive between the given times to pick up your child. **Arrive at Gate 5**, where you dropped off your child, and one of our teachers will bring them to you.

**It is very important that while on our school site that you adhere to social distancing and Covid safe practices at all times.**

Please follow the instructions on the next page to book online.



# Kindergarten Packs

Each child starting Kindergarten at Westmead receives a Kindergarten pack. This pack includes;

- Best Start information
- A starting school social story
- Uniform order form
- Additional student resources



You need to arrange a time to pick this pack up from our school. Please complete the Google Form below;

<https://forms.gle/ue5A5qkh3JkULdPw9>

# First weeks of Kindergarten

When your child starts, they will be placed in a temporary group, and will get to know the Kindergarten teachers in the first 2 weeks.

We will group your child into their class after this time.

You will receive information about your class (library day, teacher information) after the final classes are formed.



# Uniforms



## MLW Uniform

455/457 Merrylands Rd, Merrylands NSW 2160

Phone: (02) 9637 4502

**Mondays to Saturdays**

# *Parents and Citizenship Association (P&C)*

Please see information provided in your Kindergarten packs



# *Community Hub*

Please see information on school website





# Useful websites

**Westmead Public School Website:**

<https://westmead-p.schools.nsw.gov.au/>

---

**Starting school websites**

<https://education.nsw.gov.au/public-schools/going-to-a-public-school/primary-schools/starting-school>

---

<https://raisingchildren.net.au/school-age/school-learning/school-choosing-starting-moving/starting-school>

---