

Welcome to Westmead Public School



Acknowledgement of / Welcome to Country



We acknowledge the Darug people, who are the traditional custodians of the land on which our school sits. We pay our respects to elders past, present and emerging, and extend that respect to all Aboriginal people in our community.

Zoom Housekeeping

- Please ensure your microphone is on mute throughout the duration of the session
- Having your camera on is optional, although we would love to see all of your faces!
- If you have any questions, please type them into the chat.



Parent Information Evening

This evening we will discuss;

- Information regarding Westmead Public School
- P&C
- Community Hub
- Drop Off and Pick Up
- What's in a lunch box?
- What to pack in a school bag
- Learning in Kindergarten
- How to be ready for Kindergarten
- Best Start
- Kindergarten Orientation
- Uniforms



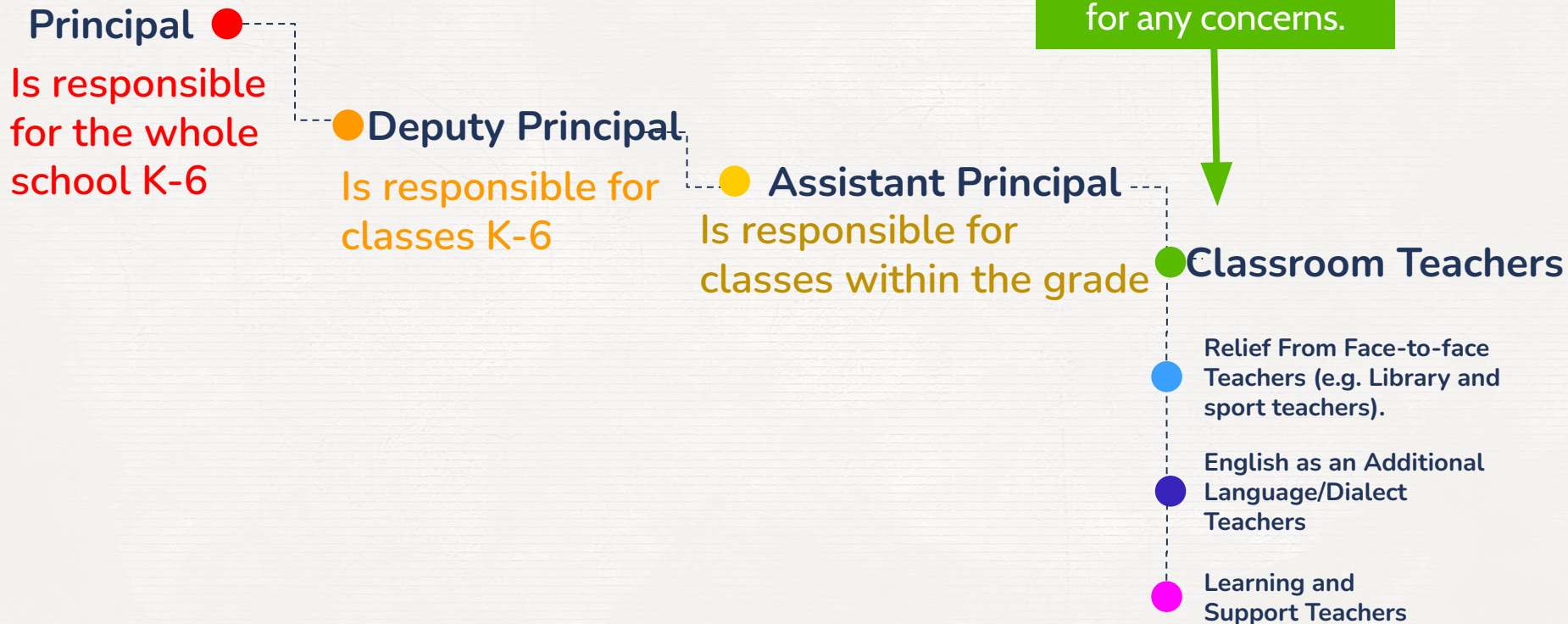


About Westmead Public School



- *Established in 1917*
- *Current enrolment of 1040 students in 41 classes*
- *Over 70 dedicated staff*
- *Extensive range of extra-curricular opportunities (music, dance, drama, visual arts, gardening, etc.)*

Our school team



Parents and Citizenship Association (P&C)



Community Hub

Please see information on school website

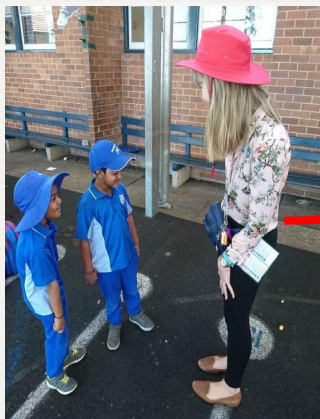




School hours

Time	Activity
8:30-9:00am	Red hat teacher playground supervision
8:55am	Line up bell
9:00-11am	Learning session 1
11-11:30am	Recess
11:30-1pm	Learning session 2
1-1:10pm	Lunch - Eating time
1:10-2pm	Lunch - Play time
2-3pm	Learning session 3
3pm	Pick up time

Arrival



From 8:30am
Red hat
teacher on
duty

Kiss & bye

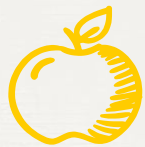
Play

Line up at 8:55am



Drop off & Pick up





What's in a Lunch box?

Crunch 'n' Sip

- 10 minute break in the classroom
- Only fruit or salad vegetable and plain water to drink



Recess

- 30 minute break on the playground
- Small snack that can be consumed quickly



Lunch

- 10 minutes eating time
- 50 minutes playing time on the playground
- Food that is easy to hold and eat



- ❑ Please ensure that your child can open their food, and that they know which items are for which break.
- ❑ Please label containers with your child's name.

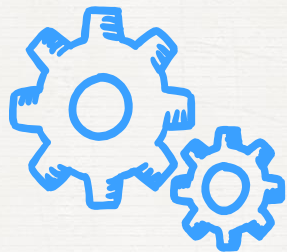


What to pack in a school bag

- ✗ Lunch box/bag with fruit, recess and lunch
- ✗ Water bottle
- ✗ Change of clothes (including socks and underwear)
- ✗ Raincoat

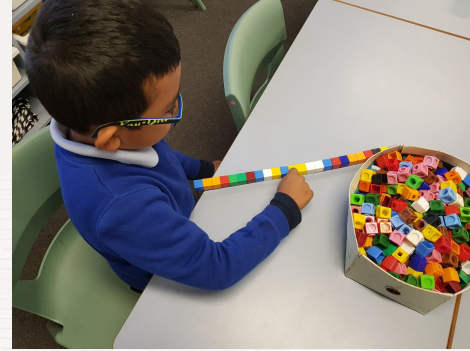
A library bag (you can use the bag from your orientation pack) on the class library day, your class day will be given later in Term 1.





Life long learners





What learning looks like at Westmead Public School



Preparing for change



Let's Get Ready For Kindergarten!

Help your child be ready for school by ensuring they can:

- ☐ open a lunchbox, drink bottle or a packet of chips
- ☐ go to the toilet independently
- ☐ boys - know how to use a urinal
- ☐ wash hands with soap and water
- ☐ use a tissue to blow their nose
- ☐ zip and unzip their school bag
- ☐ carry their school bag on their own back
- ☐ put on and take off a jumper
- ☐ recognise their name





In 2023 the Best Start Assessments will take place during your child's first few weeks of school.

There is no need to make a booking.

- It is a **requirement for every Kindergarten** child in NSW public schools
- A **tool** to help teachers
- Literacy and Numeracy focus, for teachers to understand what skills **a child starts school with**
- You do **NOT** need to prepare for Best Start
- **DOES NOT** influence class formation



JANUARY 2023

SUN	MON	TUE	WED	THU	FRI	SAT
1	2	3	4	5	6	7
8	9	10	11	12	13	14
15	16	17	18	19	20	21
22	23	24	25	26	27	28
29	30 	31				
Week 1	9:30 am start					

FEBRUARY 2023

SUN	MON	TUE	WED	THU	FRI	SAT
		1	2	3	4	
Week 2	9:30 am start					
5	6	7	8	9	10	11
Week 3	9:00 am start					
12	13	14	15	16	17	18
Week 4	9:00 am start					
19	20	21	22	23	24	25
Week 5	9:00 am start					
26	27	28				
Week 6	9:00 am start					

Dates: November 23 and 24

Times: Choice between
9:30am to 11:00 am
Or
11:30am to 1:00pm

Bookings Open: November 9 at 9am
Booking Close : November 18 at 3:00pm

Information Kindergarten
Orientation was sent to the
email address that you
provided to the school.



Kindergarten Orientation Program

Dear Parents/Carers

We are inviting our new Kindergarten students to join us an orientation program on either Wednesday the 23rd or Thursday the 24th of November where they will spend 1 hour 30 minutes in a Kindergarten classroom. This will allow them to become familiar with their surroundings and get to know our teachers before they start school in 2023.

You will need to use our online booking system to reserve a place in one of our orientation groups. You will have 4 sessions to choose from. Each session is 1.5 hours long and each follow the exact same program.

To book an appointment, please follow the instructions on the back of this sheet.

Bookings OPEN	Wednesday 9 November	9.00am
Bookings CLOSE	Friday 18 November	3.00pm

	Group	Start Time	Pick Up Time	LOCATION
<u>Wednesday</u> 23 November	Group 1	9:30am	Between 10:50am to 11:00am	Gate 5
	Group 2	11:30am	Between 12:50pm to 1:00pm	

OR

Thursday 24 November	Group 3	9:30am	Between 10:50am to 11:00am	Gate 5
	Group 4	11:30am	Between 12:50pm to 1:00pm	
*** Please note: Choose only <u>one</u> group to attend. All groups will receive the same program. ***				

OUTLINE FOR THE DAYS (Please arrive at school between 9:20am and 9:30am or 11:20am and 11:30am)

Arrival Time - Line up with your child at Gate 5 on Hawkesbury Road. You will then be directed to sign in and collect your child's name tag and Kindergarten pack.

Start Time - The Kindergarten teachers will take your child to the Kindergarten rooms to take part in various activities to familiarise them with the school.
We encourage parents to leave.

Pick Up - Please arrive between the given times to pick up your child. Arrive at Gate 5, where you dropped off your child, and one of our teachers will bring them to you.

It is very important that while on our school site that you adhere to social distancing and Covid safe practices at all times.

Please follow the instructions below to book online.

Kindergarten Packs

Each child starting Kindergarten at Westmead receives a Kindergarten pack. This pack includes;

- A starting school social story
- Daisy's First Day
- Playdough
- Letter tracing
- Tips for parents



Kindergarten packs will be picked up during your child's orientation session.

First weeks of Kindergarten

When your child starts, they will be placed in a temporary group, and will get to know the Kindergarten teachers in the first 2-3 weeks.

We will group your child into their class after this time.

You will receive information about your class (library day, teacher information) after the final classes are formed.



Uniforms



MLW Uniform

455/457 Merrylands Rd, Merrylands NSW 2160

[Phone: \(02\) 9637 4502](tel:(02)96374502)

Mondays to Saturdays



Useful websites

Westmead Public School Website:

<https://westmead-p.schools.nsw.gov.au/>

Starting school websites

<https://education.nsw.gov.au/public-schools/going-to-a-public-school/primary-schools/starting-school>

<https://raisingchildren.net.au/school-age/school-learning/school-choosing-starting-moving/starting-school>
